

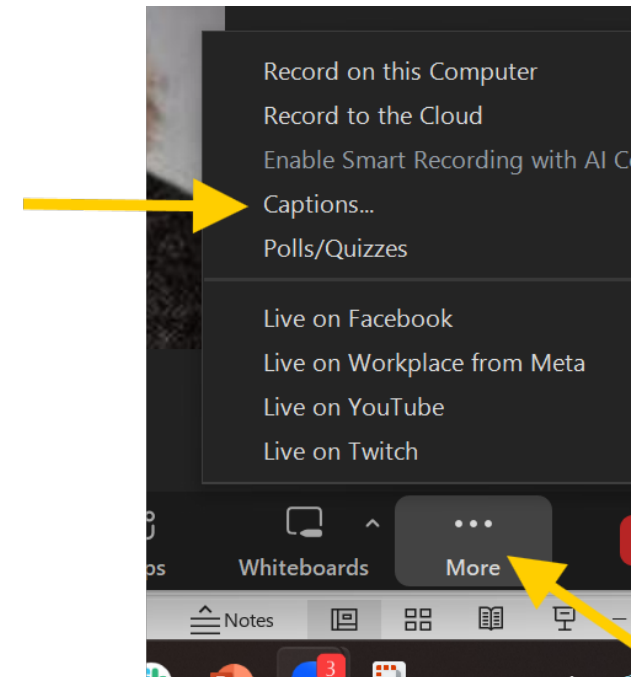
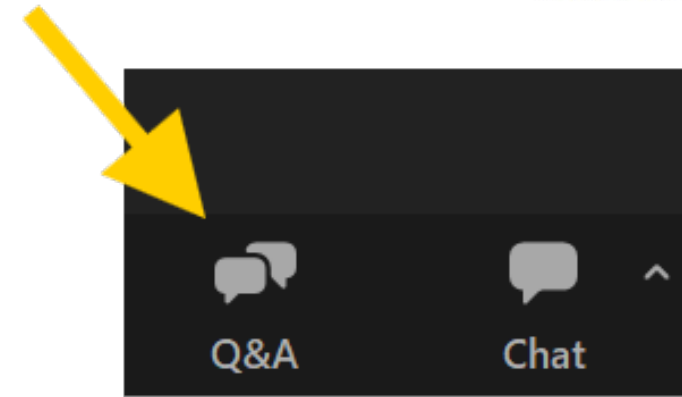
Addressing HRSNs Through Medicare:

An Update on CY 2025 Changes and Implementation Activity for Community Health Integration and Principal Illness Navigation (CHI/PIN) Codes

January 29, 2025 | 1:00 - 2:00 p.m. ET

Administrative Notes

- ✓ This webinar is being recorded. The recording and slides will be shared with all registrants
- ✓ Please use the Q&A tab at the bottom of your screen and we'll try address as many questions as possible at the end of the presentation
- ✓ Closed captions are provided for this session, can also click "Show Captions" to display automated captions



Partnership
to Align Social Care

A National Learning
& Action Network

Advancing and socializing
**Community Care Hubs
(CCH)** as a preferred
organized delivery system to
**enable sustainable and
aligned social and health
care ecosystems** providing
holistic, person-centered care.

June Simmons

President/CEO, Partners in Care
Foundation

Partnership Co-Chair

Timothy McNeill

CEO, Freedman's Health Consulting
Partnership Co-Chair

Autumn Campbell

Director, Partnership to Align Social Care
acampbell@partnership2asc.org

Jeremiah Silguero

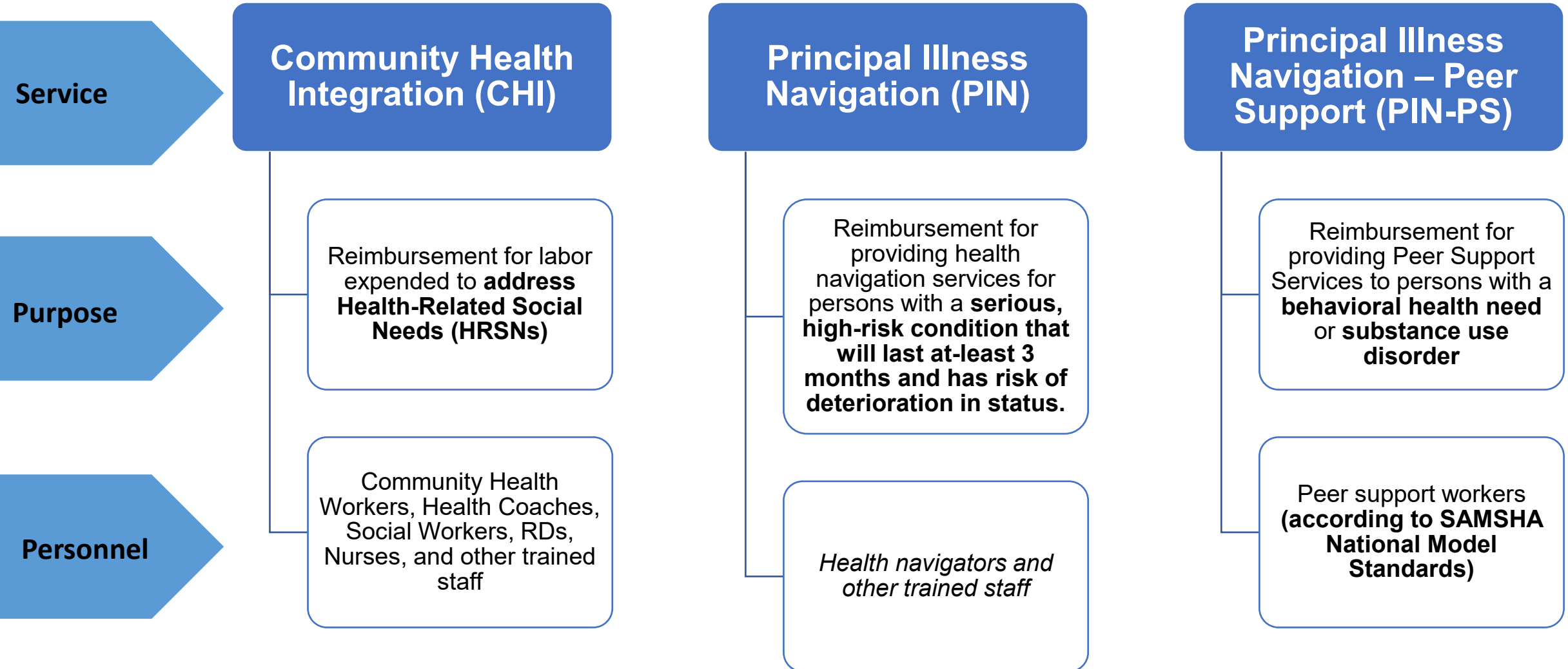
Senior Manager

jsilguero@partnership2as.org

CMS Physician Fee Schedule Updates

- Landmark Final Rule creates the first of its kind pathway for reimbursement for Community Health Worker labor in the Medicare program.
- Effective Date: **January 1, 2024** updated **January 1, 2025**
- Part B benefit which applies to persons in **Original Medicare, MA, & Special Needs Plans.**
- Applies to all Medicare Part B providers.
- FQHCs & RHCs can bill for each of these services.

New Healthcare Common Procedure Coding System (HCPCS) Billing Codes for addressing unmet needs



CHI HCPCS	Descriptor	Non-Facility Rate	Facility Rate
G0019	Community Health Integration Services (CHI) SDOH 60 min	\$77.96	\$47.55
G0022	Community Health Integration Services (CHI); add ea. 30 min	\$48.52	\$33.32

PIN HCPCS	Descriptor	Non-Facility Rate	Facility Rate
G0023	PIN Service, 60 minutes per month	\$77.96	\$47.55
G0024	PIN Service, add ea. 30 min	\$48.52	\$33.32

PIN-PS HCPCS	Descriptor	Non-Facility Rate	Facility Rate
G0140	PIN-Peer Support, 60 minute	\$77.96	\$47.55
G0146	PIN-PS, Peer Support, add ea. 30 min	\$48.52	\$33.32

***Rates listed are the National Rate, effective January 1, 2025**

Panel Discussion Featuring CHI/PIN Implementation Efforts



Lisa Coombs-Gerou
V.P. Business Development
and COO, YMCA of
Metropolitan Milwaukee



David Crocker,
Director, Community Care,
SARCOA, Area Agency on Aging



AJ Diamontopoulos,
Manager, Integrated Health,
Area Agency on Aging,
DRCOG

Partnership
to Align Social Care

A National Learning
& Action Network



FREEDMEN'S HEALTH
HEALTH IS FREEDOM

Participant Discussion

Mapping Innovation in CHI/PIN/PIN-PS Implementation

The CMS RFI for Utilization and CBO Partnerships

- CMS requests ongoing information on utilization patterns for CHI/PIN/PIN-PS.
- The utilization information should highlight models that include CBO partnerships and sites that provide the services without a CBO partners.
- The Partnership will support this request with the development of a national repository of innovation in CHI/PIN/PIN-PS implementation.

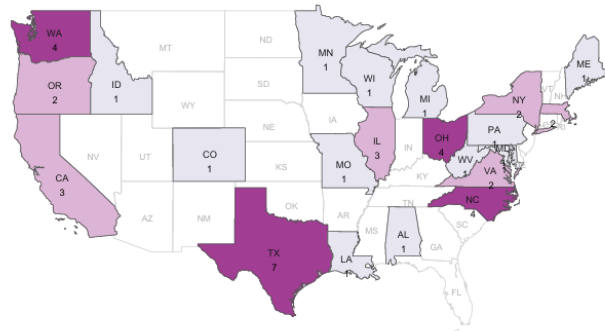
Benefits to Your Organization

The Partnership will launch an interactive mapping tool documenting where innovation in CHI/PIN/PIN-PS is occurring or planned to occur.

Participants can have their organization added to the map outlining participating organizations.

Will support collaboration with other organizations and payers in your market and inform CMS where services are occurring.

Health Equity Learning
Collaborative Participants



- How to Read:
- States are colored and labeled by the number of applicant organizations
 - Select a state on the map to drill down to cities where applicant organizations are located
 - Select an applicant organization on the table to drill down the map to the exact organization's location
 - Select the navigation button to return to the State map
 - Cities (Texas) may contain more than 1 organization, hover over visual elements for extended information

Organization
select organization

State
select state

<input checked="" type="checkbox"/>	Applicant organization name	State	City	Address
<input type="checkbox"/>	AgeOptions	Illinois	Oak Park	1048 Lake Street
<input type="checkbox"/>	AgeSpan, Inc.	Massachusetts	Lawrence	280 Merrimack Street, Suite 400
<input type="checkbox"/>	AHN Foundation	California	Lakewood	4924 Pearce Ave
<input type="checkbox"/>	ASSURED HEART FOUNDATION	Texas	DALLAS	9319 LBJ FWY
<input type="checkbox"/>	Beacon Community Connections	Louisiana	Lafayette	123 E Main St. Ste 200
<input type="checkbox"/>	Better Health Together	Washington	Spokane	157 S Howard Street
<input type="checkbox"/>	Cartmill Empowerment Solutions	North Carolina	Monroe	2242 W. Roosevelt Blvd
<input type="checkbox"/>	CCAH	California	Scott Valley	1600 Green Hills Road
<input type="checkbox"/>	Center For Independence	Washington	Lakewood	7801 Bridgeport Way W #200 Lakewood W.
<input type="checkbox"/>	ChefHome Metz	Pennsylvania	Dallas	2 Woodland Dr
<input type="checkbox"/>	Chinese American Service League	Illinois	Chicago	2141 S Tan Court
<input type="checkbox"/>	CHW Liberation Consulting, LLC	Virginia	Alexandria	5510 5510 Cherokee Avenue

Innovation Site Key

- There will be two (2) different eligibility criteria to self-certify to participate:

#1. Organizations that have filed at least one eligible claim for CHI/PIN/PIN-PS.

- With internal staff only.
- With auxiliary personnel provided by an eligible CBO.

#2. Organizations that are developing revised workflows to initiate billing CHI/PIN/PIN-PS and anticipate filing claims within six (6) months.

- With internal staff only.
- With auxiliary personnel provided by an eligible CBO.

Next Steps

- ✓ An information solicitation request will be coming to all webinar participants to be included in the innovation mapping tool.
- ✓ A survey will be sent to all participants to request input on the types of implementation assistance you would like to have to assist with full implementation of these services.

Partnership
to Align Social Care

A National Learning
& Action Network



Thank You!